

Honeywell

HD-DVR-1004

HD-DVR-1008

HD-DVR-1016

Digital Video Recorder

User Manual

6 Web Client Operation

Note

- All the operations here are based on HD-DVR-1016.
 - There might be slight differences in the interface due to the updated series.
-

Network Connection

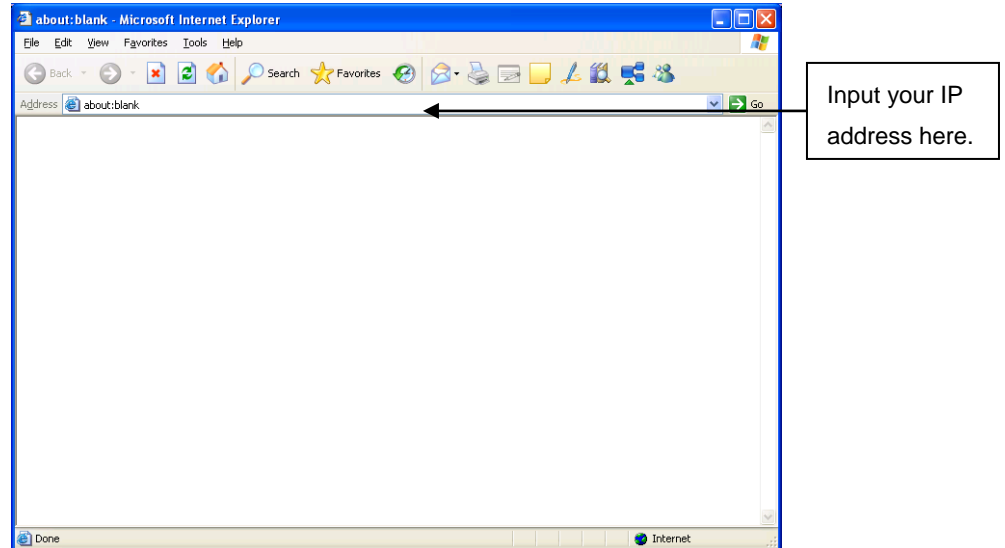
Before the web client operation, please check the following items:

- Network connection is right
- DVR and PC network setup is right. Please refer to network setup (**main menu→setting→network**)
- Use order ping `***.***.***.***`(* DVR IP address) to verify that there is a good connection. Usually, the return TTL value should be less than 255.
- Open the IE and then input DVR IP address.
- System can automatically download latest web controls and the new version can overwrite the previous one.
- If you want to un-install the web control, please run *uninstall webrec2.0.bat*. Or you can go to C:\Program Files\webrec to remove single folder. Please note, before you un-install, please close all web pages, otherwise the un-installation might result in error.

Login

Open IE and input DVR address in the address column. For example, if your DVR IP is 10.10.3.16, then please input `http:// 10.10.3.16` in IE address column. See *Figure 6-1*

Figure 6-1 Sample of IE Login



A system pop up with warning information will ask you if you want to install webrec.cab control. Please click yes button.

If you can't download the ActiveX file, please modify your settings as follows, enable or prompt all disabled Active X items. See [Figure 6-2](#) and [Figure 6-3](#).

Figure 6-2 The Internet Options Window

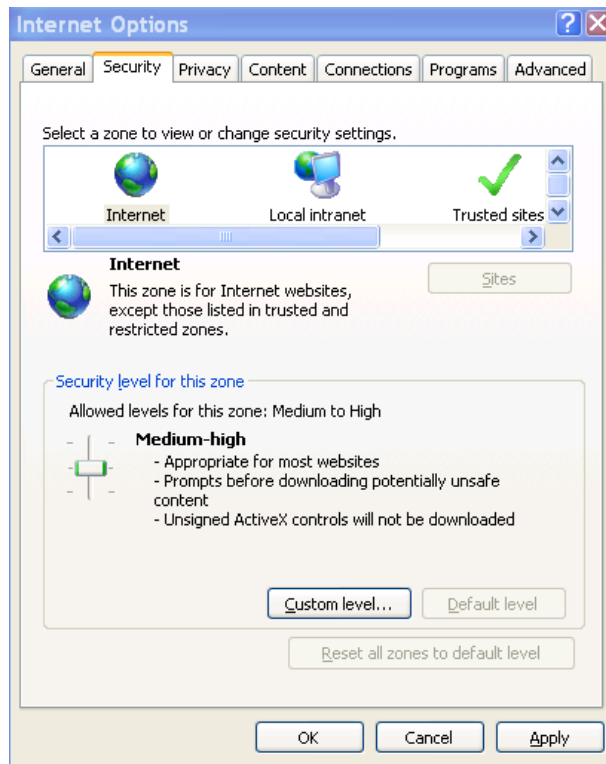
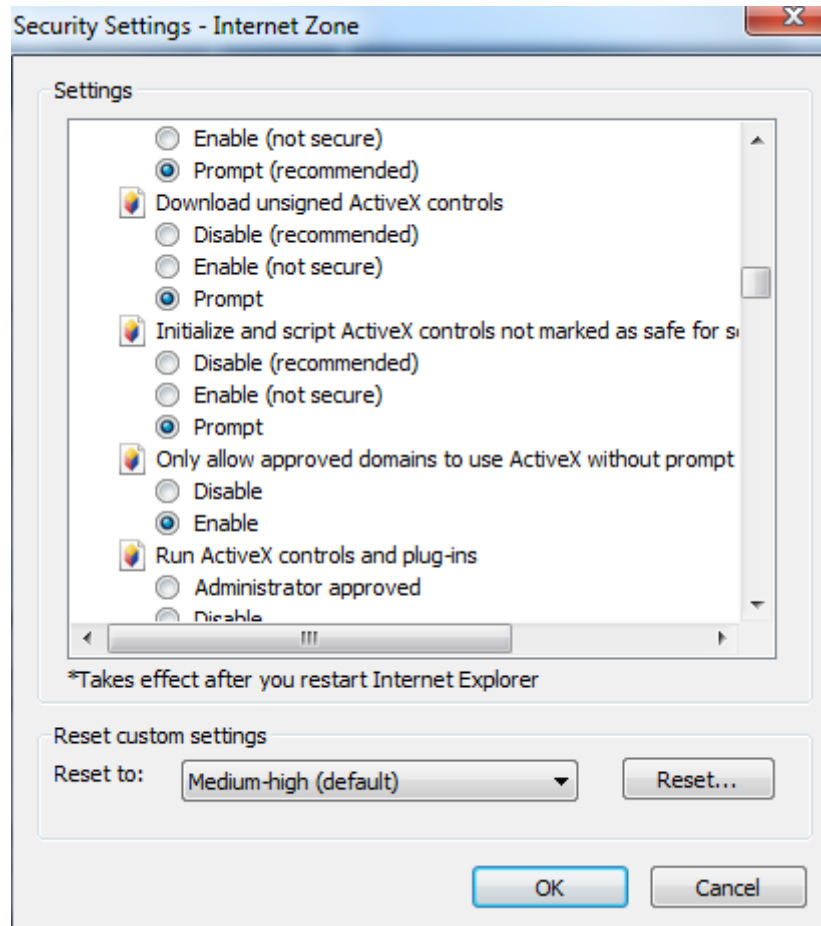


Figure 6-3 The Settings for ActiveX



After installation, the interface is shown as below. See [Figure 6-4](#) Please input your user name and password.

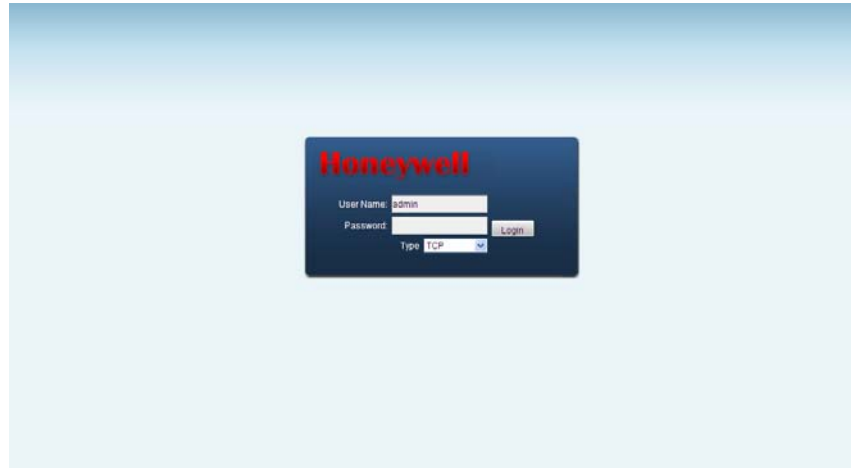
Default factory name is admin and password is admin.

Note

For security reasons, please modify your password after you first login.

Web Client Operation

Figure 6-4 The Web Login Window



After you logged in, you can see the main window. See [Figure 6-7](#)

This main window can be divided into the following sections.

- Section 1: There are five function buttons: configuration, search, alarm, about, and log out .
- Section 2: There are channel number buttons and four function buttons: open all, start dialog, local play, and refresh.
- Section3: There are PTZ controls (see [PTZ](#)), color (see [Color](#)) buttons, and you can also select the picture path and the record path.
- Section 4: Real-time monitor window. Please note current preview window is circled by a green rectangle zone.
- Section 5: Here you can view window switch button. You can also select video priority between fluency (smooth playback quality) or real-time (low latency).
 - System monitor window switch supports full screen/1-window/4-window/6-window/8-window/9-window/13-window/16-window/20-window/25-window/36-window. See [Figure 6-5](#).

Figure 6-5 The Window Switch Menu

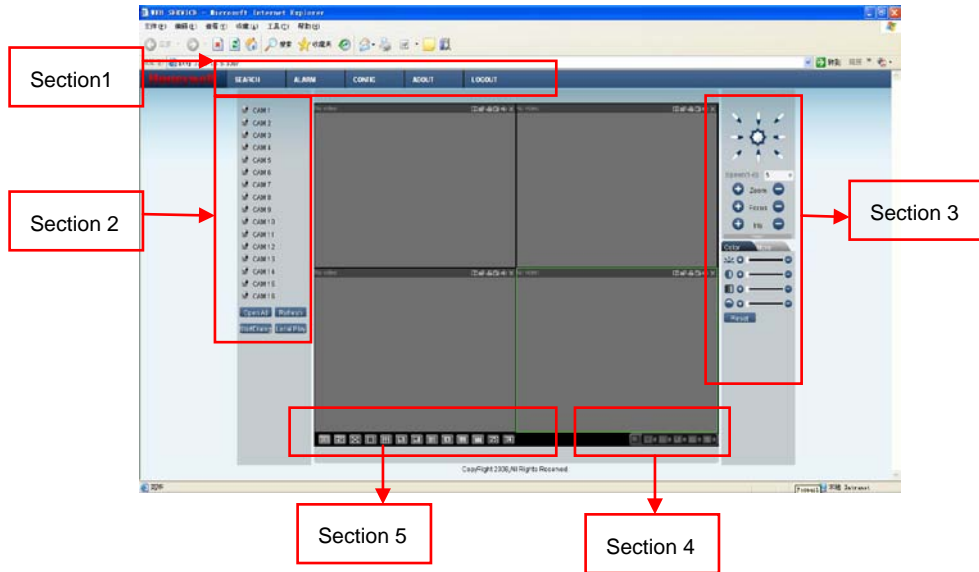


- Preview window switch. System support 1/4/8/9/16-window real-time preview. Please you need to have the proper rights to implement preview operation. You cannot preview if you have no right to preview the either channel. See [Figure 6-6](#).

Figure 6-6 The Preview Window Switch Menu



Figure 6-7 The Main Menu of Web Client

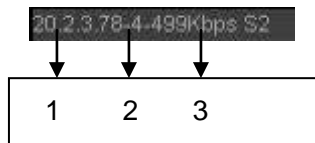


Real-Time Monitor

In section 2, left click the channel name you want to view, you can see the corresponding video in the current window.

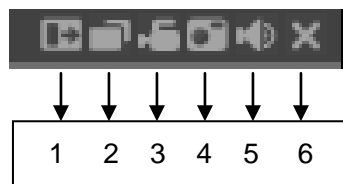
On the top left corner, you can view device IP, channel number, and network monitor bit stream.

Figure 6-8 Status Information



There are six function buttons in the top right corner. See [Figure 6-9](#).

Figure 6-9 Control Setup

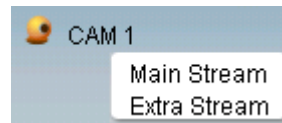


Web Client Operation

- 1: Digital zoom: Click this button and then left drag the mouse in the zone to zoom in. Right clicking mouse system restores original status.
- 2: Change show mode: resize or switch to full screen mode.
- 3: Local record. When you click the local record button, the system begins recording and this button becomes highlighted. You can go to the system folder RecordDownload to view the recorded file. Clicking the highlighted button will stop local recording, and the button will resume original status.
- 4: Capture picture. You can snapshot important video. All images are memorized in system client folder \download\picture (default).
- 5: Audio: Turn on or off audio (this has no relationship with system audio setup).
- 6: Close video.

Please refer to [Figure 6-10](#) for the main stream and extra stream switch information.

Figure 6-10 Switch between the Main Stream and Extra Stream



Note If a DVR user changes channel names locally, manual refresh (F5) of the web page is required to update the channel names in the web client.

Open All

You can click it to open all channels.

Refresh

You can use button to refresh camera list.

Start Dialogue

You can click this button to enable audio talk.

Local Play

Click **Local Play**, and the system pops up the following interface for you to select local play file. See [Figure 6-11](#)